

TELECRANE F21-E1/4/2



Mobile lift



Tow truck



Cranes

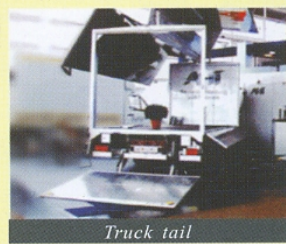


Winch for jeep

# F21 Series Radio Controls

F21-2S / 2D / 4S / 4SB / 4D / E1 / E1B  
*Useable in a vast array of INDUSTRIAL EQUIPMENT*

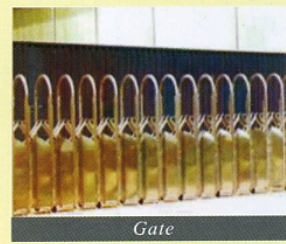
- \*Water-proof and Dust-proof meets IP 65 standard
- \*Durable casing made of Fiber Reinforced Nylon
- \*Superior operating temperature range -35°C~+80°C
- \*Very low power consumption design using only 2 AA Size Alkaline batteries with 4 months average battery life
- \*Integrates Hamming Code, Self-diagnosis and 4.3 billion ID Codes
- \*Easy programming via WIN95/98/2000/NT
- \*Operating distance up to 50 ~ 100 meters (depending on model)



Truck tail



Chain hoist



Gate



Conveyor



Hydraulic equipment



PLC Human-machine Interface



Model: F21-4SB (4-button w/single speed)  
 Size: 164x75x46 mm  
 Weight: about 370 g (w/batteries)



Model: F21-E1B (6-button w/single speed)  
 Size: 164x75x46 mm  
 Weight: about 380 g (w/batteries)



Model: F21-4S (4-button w/single speed)  
 F21-4D (4-button w/double speed)  
 Size: 156x61x51 mm  
 Weight: about 320 g (w/batteries)



Model: F21-2S (2-button w/single speed)  
 F21-2D (2-button w/double speed)  
 Size: 130x45x22 mm  
 Weight: about 120 g (w/batteries)

# F21 Series PC program window

F21-E1/E1B

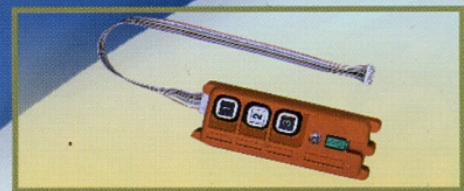


F21-E1/4/2 Receiver  
Weight: 550g (w/o wire cable)  
Size: 185x85x85mm

Opt08: CD-ROM & interface cable



Opt09: Copier

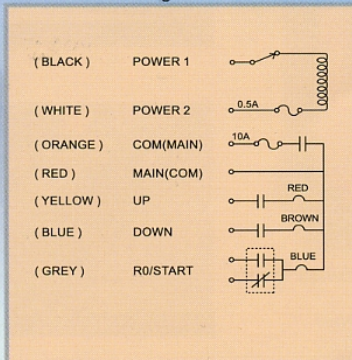


F21-4S/4D/4SB

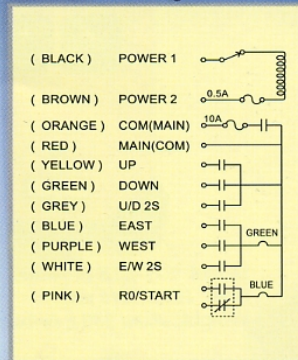


F21-2S/2D

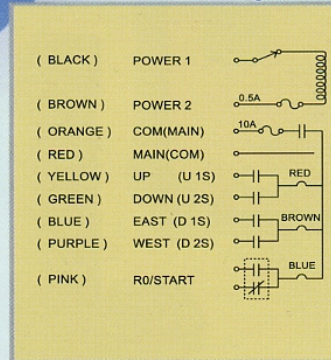
F21-2S Wire Diagram



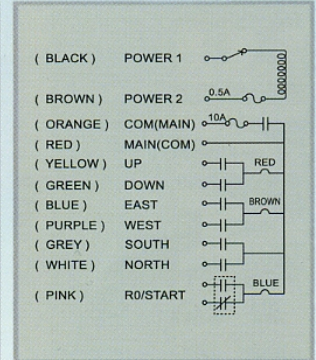
F21-4D Wire Diagram



F21-4S/4SB/2D Wire Diagram



F21-E1/E1B Wire Diagram



Model: F21-4D-I

**Purchasing information**

- 0 DC 12~24V
- 1 AC 48 / 220V 50 / 60Hz
- 2 AC 110 / 220V 50 / 60Hz
- 3 AC 220 / 380V 50 / 60Hz
- 4 AC 48 / 110V 50 / 60Hz
- 5 AC 24 / 48V 50 / 60Hz

- D Double speed
- S Single speed
- 2 2 button
- 4 4 button

- F21-4SB-4 4-button w/single speed, AC 48/110V 50/60Hz
- F21-E1-2 6-button w/single speed, AC 110/220V 50/60Hz
- F21-E1B-0 6-button w/single speed, DC 12~24V

